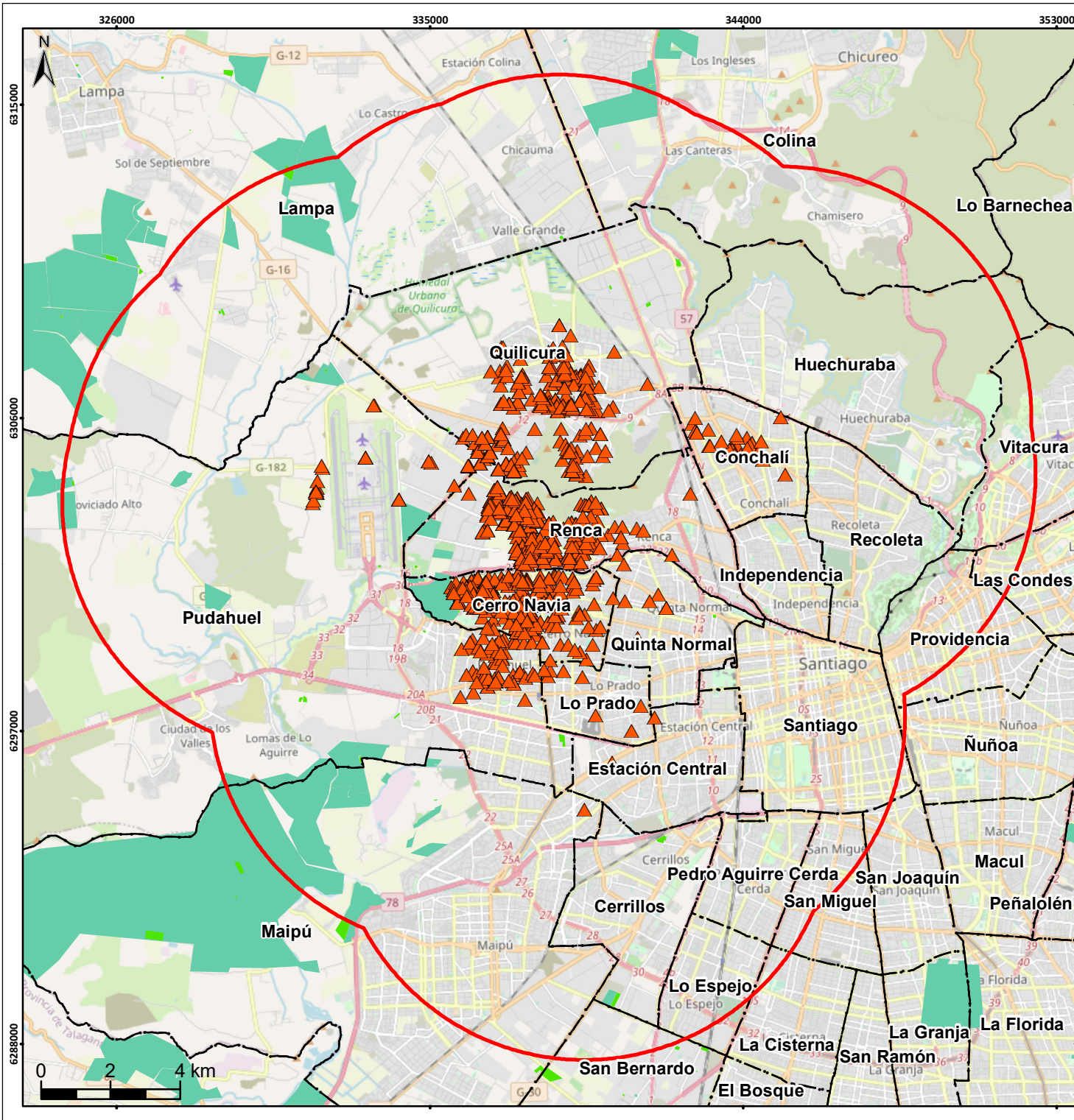




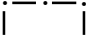
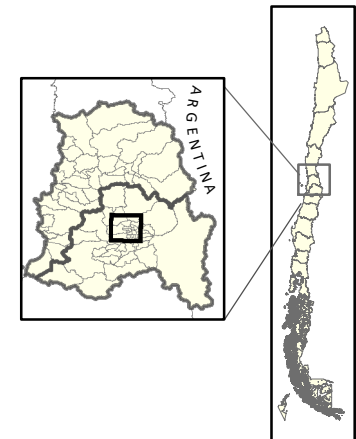


**Servicio Agrícola y Ganadero**  
**Detección de *Ceratitis capitata* en**  
**la Región Metropolitana**  
**Campaña Cerro Navia - Abril 2022**



**Legenda**

-  Detecciones al 30-04-2022
-  Área de 7,2 km
-  Predios (CSG)
-  Plantas (CSP)
-  Límite Comunal



**Información Cartográfica**  
 Datum WGS 84 - Huso 19 Sur  
 Escala de Referencia: 1:160.000

